



Well-being is not seen, it is felt.



Experimental lines

Human System:
Embryonic cells

Vegetal System:
Citrus, ornamental plants,
strawberries, vegetables
and mushrooms.

Animal System:
Pig, poultry and
competition horses.

We create healthy spaces free from the effects of natural and artificial electromagnetic pollution



Veema Human System

What is electromagnetic pollution?

Electromagnetic pollution is the **excessive exposure** to the radiation waves produced by **natural elements** (hollow cavities of the subsoil water, thunderstorms) and **artificial elements** (radio waves, antennas, wireless, electrical power lines). These waves invisibly damage the cellular structure of living organisms such as people, animals or plants.

The earth emits waves of frequency of **7.83 Hz** on average, which are optimal for cells, but because of the excess electromagnetic pollution (EMF), these are altered and do not always reach us with the right intensity.

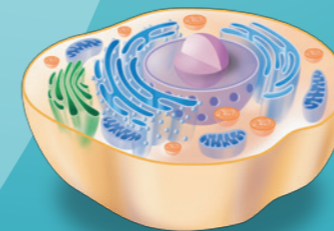


What effects does it have on us?

Excessive exposure to electromagnetic waves can produce what is called a **geopathy**. Geopathies may involve a loss of the reproductive capacity of the cells, possible damage to the genetic code, nervous alteration, discomfort and other symptoms such as:

- INCREASED NERVOUSNESS AND STRESS
- PROBLEMS IN THE QUALITY OF SLEEP
- SEMICIRCULAR LIPOATROPHY
- CHRONIC EXHAUSTION
- ELECTROSENSITIVITY
- MIGRAINES, HEADACHES, ...

The uncontrolled excess of radio waves, antennas or wireless networks cause electromagnetic pollution.



Section of a human cell

The earth emits a frequency of 7.83 Hz on average, optimal for the performance of our cells.

Because of the hollow natural hollows of the earth's subsoil or underground infrastructures, the frequency is altered.

La frecuencia alterada geológicamente no es la adecuada para nuestras células.

Geopathies of artificial origin

Geopathies of natural origin

What is Veema Human System and what is it for?

Veema Human System is a system that **reduces the effects of electromagnetic pollution** that surrounds us and that allows to **recovering the natural frequency** of that living beings need (7.83 Hz on average).

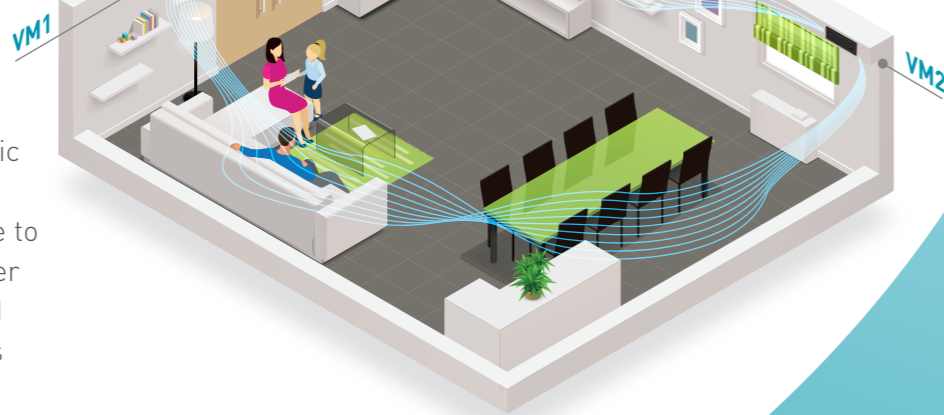
Taking advantage of the circulation of air currents, natural or artificial, Veema Human System generates waves through two devices (VM1 and VM2) that **strategically placed** cause dynamic within the treated area that **harmonizes space** and reduces the effects negative caused by excess electromagnetic pollution.

Its results are sustained in **more than 15 years of research** and contrasted in several thousand installations.



How is it installed?

After a **study** of the volume of air, ventilation systems and electromagnetic flows through **spectrometry** and an assessment of the distribution of space to be treated, we can calculate the number of devices **VM1** and **VM2** necessary and place most suitable placement for thus provide the **highest possible performance**.



What are the benefits of Veema Human System?

The main objective of Veema Human System is to **harmonize the spaces**, that is: to make them **healthier**. Once installed, a greater **sense of tranquility** and concentration in individuals is detectable.

At present, we have thousands of facilities throughout the country that provide services to public entities, companies and homes.

Veema Human System is the **technology of wellness** that can not be seen, but is felt.



Homes: Reduces stress and exhaustion, improves relaxation and insomnia, improving well-being in the home.



Schools and universities: Greater concentration of students and less fatigue for the teaching staff.



Hotels and restaurants: Better rest and greater customer loyalty, better service and lower worker absenteeism.



Industries and offices: Improves productivity by decreasing error rates.



Retail: Better customer service and better work performance.



Health centers: More effective treatments and better patient recovery.



www.veemasolutions.com



Created and developed by:



Vilardebó & Mortensen®

Ctra. de Juià, 16-18 · 17460 Celrà [Girona · Spain]
t. +34 972 201 799 · vm@veemasolutions.com